



*Eddie Bauer* EST. 1920

**WHY HIKE**

SUMMER 2019

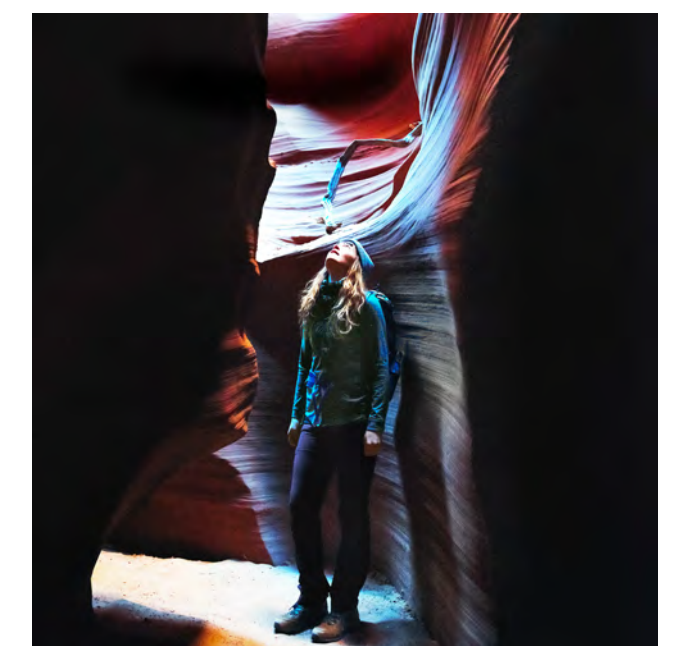
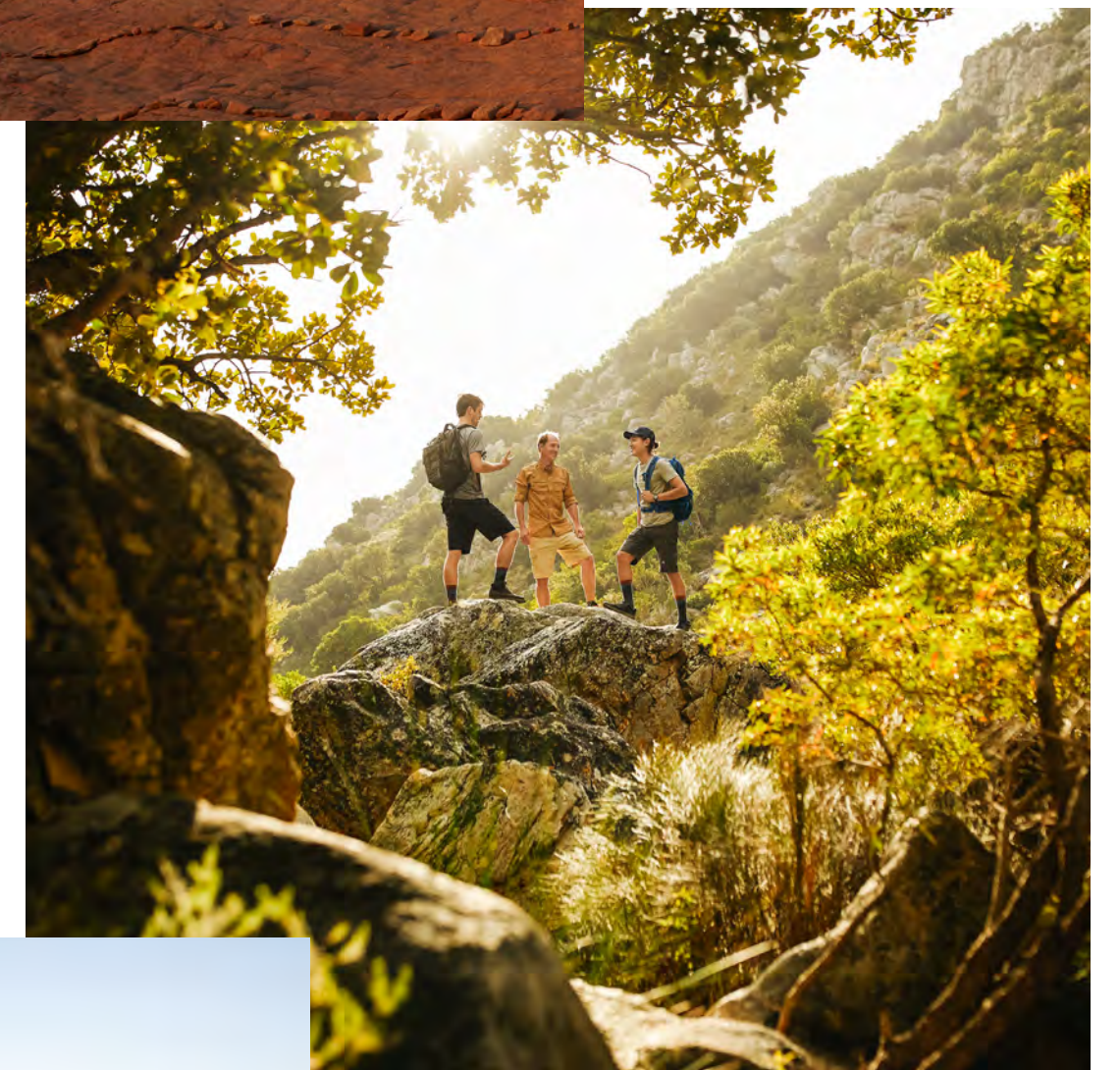
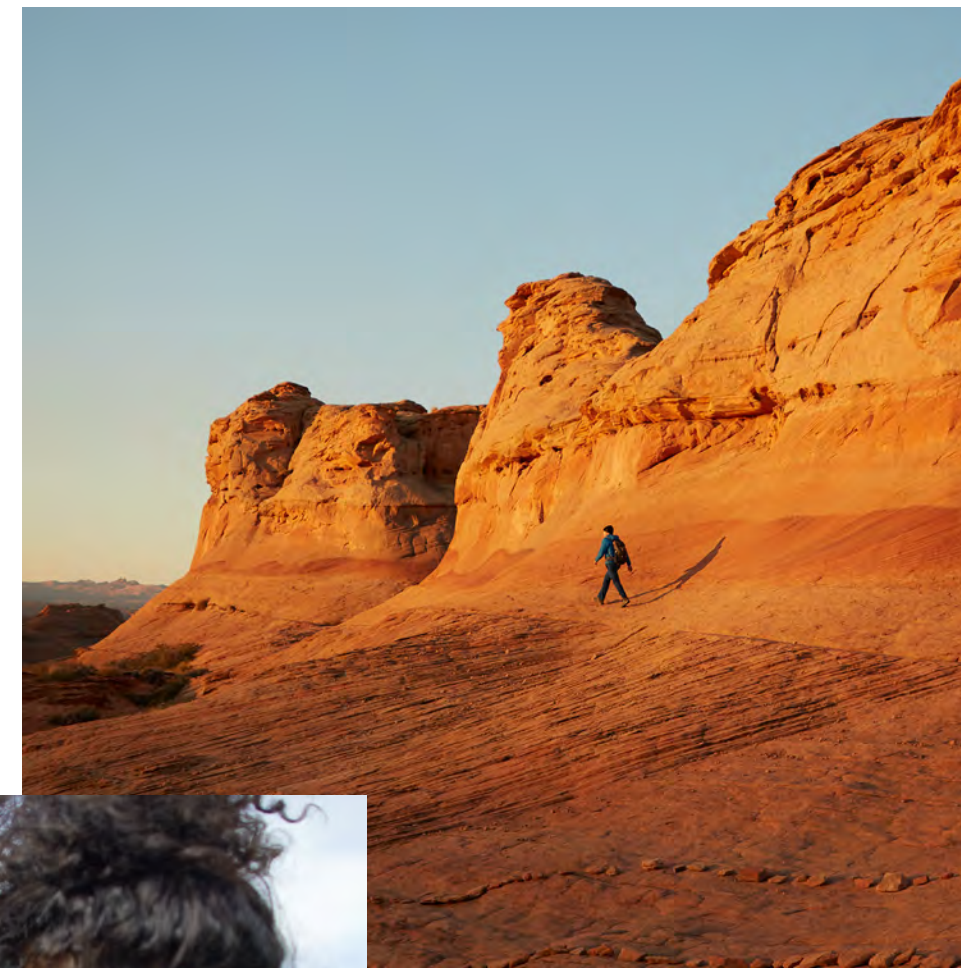


# I Hike For

## ADVENTURE

#WHYIHike

Motivation is no problem when the payoff is a walk in an old growth forest, the view from a mountaintop ridge, or the humming silence of wild spaces untouched by traffic, roads, or cell service. We hike for the simple joy of it. For the restorative power of it. And for the adventure of putting one foot in front of the other in the midst of the spectacular beauty that is Planet Earth. At Eddie Bauer, hiking isn't just our passion, it's in our DNA. It informs what we make and how we make it. On these pages, you'll find the newest examples of what we mean—products that have the love of walking in nature woven indelibly in the seams.





# GO HOT. STAY COOL.

## TrailCool for Active Adventures

Technical knits featuring chemical-free Coolcore® technology.  
Rapid moisture dispersion for quick drying and maximum  
comfort during peak performance.

 MOTION®







**NEW**  
**TRAILCOOL SCOOP-NECK T-SHIRT**

Stretch blend of chemical-free Coolcore® polyester/spandex wicks moisture, helps regulate temperature, and shields you from the sun.

- FreeDry® moisture wicking
- FreeShade® UPF 15 sun protection
- Built-in odor control—stays fresher longer
- Flatlock seams for fabric stabilization and to eliminate chafing
- Mesh on back yoke enhances breathability

**COLORS:** REDWOOD, WEDGEWOOD, MEDIUM HEATHER GRAY, WHITE



**NEW**  
**TRAILCOOL RACERBACK TANK**

Same features as the Scoop-Neck T-shirt in a tank.

**COLORS:** REDWOOD, WEDGEWOOD, MEDIUM HEATHER GRAY, WHITE



**NEW**  
**TRAILCOOL HIGH-RISE CAPRIS**

High-performance Coolcore® nylon/spandex stretch fabric wicks moisture, dries fast, and has built-in odor control.

- High-rise body with Power Mesh waistband
- Interior waistband pocket
- Side pockets with bonded seam for sleek lines
- Textured mesh at calf

**COLORS:** BLACK, CARBON







**NEW**  
**TRAILCOOL T-SHIRT**

Unrestricted mobility in a stretch blend of chemical-free Coolcore® polyester/spandex that wicks moisture, helps regulate temperature, and shields you from the sun.

- FreeDry® moisture wicking
- FreeShade® UPF 15 sun protection
- Built-in odor control—stays fresh longer
- Flatlock seams for fabric stabilization and to eliminate chafing
- Mesh on back yoke enhances breathability

**COLORS:** MEDIUM HEATHER GRAY, MEDIUM INDIGO



**NEW**  
**TRAILCOOL BOXER BRIEF**

Made of a similar chemical-free Coolcore® blend as our T-shirt, with extra stretch for exceptional comfort.

**COLORS:** BLACK, CINDER





# THE TRAILCOOL TOUCH

Sometimes it's the little things that make all the difference in maintaining comfort on the trail.



**NEW**  
**TRAILCOOL UPF COOLING SUN HAT**

Built-in sun protection and Coolcore® fabric technology sustains comfort during outdoor adventures.

- FreeShade® UPF 30 sun protection
- Snaps on sides let you fold up and secure the foam brim
- Adjustable drawstring chin strap

**COLORS:** LIGHT KHAKI



**NEW**  
**TRAILCOOL UPF COOLING CAP**

Classic baseball cap style with serious performance. Sun protection and Coolcore® technology.

- FreeShade® UPF 50+ sun protection

**COLORS:** LIGHT KHAKI



**NEW**  
**TRAILCOOL UPF COOLING CLAVA**

Wear it as a head or neck covering. Coolcore® technology is activated by soaking in water, wringing, and snapping.

- FreeShade® UPF 35 sun protection

**COLORS:** BLACK, MEDIUM INDIGO, REDWOOD



**NEW**  
**TRAILCOOL UPF COOLING TOWEL**

Lightweight and absorbent. Coolcore® technology is activated by soaking in water, wringing, and snapping.

- FreeShade® UPF 25 sun protection

**COLORS:** MEDIUM INDIGO, REDWOOD





# DAY HIKE KIT FOR WOMEN

Hiking Rule #1: Check the weather report. Hiking rule #2: Be prepared for it to change.

## NEW VENTATREX PACKABLE JACKET

This wind- and water-resistant soft shell weighs just 5 oz, making it ideal for travel.

- Light, supple fabric with perforations to enhance breathability
- Ergonomic hood provides weather and sun protection
- Packs into interior pocket for easy storage
- Longer length with droptail hem for added coverage

**COLORS:** PALE PINK, STORM

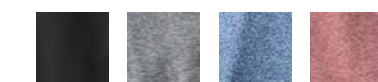


## NEW TRAIL TANK

Racerback style with compression, four-way stretch polyester/spandex for superior mobility and comfort.

- FreeDry® moisture wicking
- Polygiene® odor control—Wear More. Wash Less®
- Flatlock seams for smooth fit

**COLORS:** BLACK, HEATHER GRAY, MEDIUM INDIGO, REDWOOD



## NEW TRAIL MIX HYBRID LEGGINGS

Hybrid version of our bestselling Trail Tights, with water-repellent woven fabric on front panel and pockets.

- FreeDry® moisture wicking
- StormRepel® DWR finish on woven front panels
- FreeShade® UPF 50 sun protection
- Polygiene® odor control—Wear More. Wash Less®

**COLORS:** BLACK, HEATHER GRAY



## NEW BYGONE CONVERTIBLE WAISTPACK

The newest member of our bestselling Byone gear family. Wear as a waistpack or crossbody.

- Double zipper main compartment
- Exterior and interior zip pockets
- 11" x 4" x 6.25"

**COLORS:** BLACK, PUMICE



## NEW ATLAS CLOUDLINE SNEAKER

Built for adventure travel with a lightweight knit upper, reinforced eyestays, and extra-cushioning Cloudline outsole.

- Women's sizes 6-10, 11

**COLORS:** CINDER, DARK SMOKE, MEDIUM INDIGO



BLOCKTAGON WATERBOTTLE 022-0381, TRAILCOOL UPF COOLING TOWEL  
014-0188, MADISON PARK SUNGLASSES 022-0398



# The All-New, 5 oz. BC Uplift

---

## FULLY WATERPROOF. NEARLY WEIGHTLESS. PURE GENIUS.



SUPER DWR



LIGHTWEIGHT



WATERPROOF



PACKABLE



SEAM-SEALED



### **FIRST ASCENT**

Tested and approved by guides, the new BC Uplift is the lightest waterproof jacket we've ever made. Built for hiking, climbing, backcountry skiing, or any other outdoor adventure, it's the ultimate minimalist jacket with maximum weather protection—and it packs into its own chest pocket when the weather decides to cooperate.



# PERFORMANCE KIT FOR WOMEN

Conditions can change at any moment. Boost your rain-or-shine readiness with this performance kit.

## **NEW** BC UPLIFT JACKET

Complete waterproof protection that weighs just over 5 oz. Fully seam-sealed.

- WeatherEdge® Pro nylon shell is waterproof/breathable to 20k/20k
- StormRepel® Super DWR moisture-shedding finish
- Packs into chest pocket for easy storage
- Adjustable hood fits with or without helmet

**COLORS:** BLACK, BLUE SMOKE



## **NEW** GUIDE PRO TRAIL TIGHT LEGGINGS

Next-gen, technical version of our bestselling Trail Tights. Now with four-way stretch CORDURA® NATURALLE™ nylon/spandex for superior durability.

- CORDURA fabric with the look and feel of cotton
- FreeDry® moisture wicking
- Power Mesh waistband with hidden pocket
- Angled zip pockets at hip for ease of movement

**COLORS:** BLACK, CARBON, ASCENT BLUE

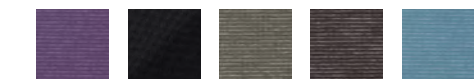


## **NEW** INFINITY TANK

Lightweight, split-back style in stretch polyester/spandex that's ideal for trek and travel.

- FreeDry® moisture wicking
- Polygiene® odor control—Wear More. Wash Less®

**COLORS:** AMETHYST, BLACK, DARK THYME, DARK SMOKE, RAIN

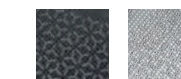


## **NEW** HYPERTRAIL

Our most technical shoe for moving fast on the trail. Also known to excel in town.

- Breathable, moisture-wicking upper
- Exclusive Trailfork shank supports instep, frees the ball of the foot
- InsoFit® cushioning EVA footbed
- SpeedPitch lug outsole for agility and traction
- Women's sizes 6-10, 11

**COLORS:** BLACK, SILVER



TRAILCOOL UPF COOLING CLAVA 014-0189, VACUUM BOTTLE 022-0135,  
PRESTON POLARIZED SUNGLASSES 022-0250





# PERFORMANCE KIT #1 FOR MEN

Even hikes in high summer run into rain sometimes. Be ready when the clouds roll in.

## NEW BC UPLIFT JACKET

Complete waterproof protection that weighs just under 7 oz. Fully seam-sealed.

- WeatherEdge® Pro nylon shell is waterproof/breathable to 20k/20k
- StormRepel® Super DWR moisture-shedding finish
- Packs into chest pocket for easy storage
- Adjustable hood fits with or without helmet

**COLORS:** PIMENTO, BLACK



## MERIDIAN PRO 9" SHORTS

Flexion two-way active stretch and a compression liner make these shorts ideal for warm-weather active pursuits.

- FreeDry® moisture wicking
- Polygiene® odor control. Wear More. Wash Less®
- Laser-cut perforations on side panels for superior breathability
- Elastic/drawstring waist

**COLORS:** HEATHER GRAY, BLACK



## NEW TRAILCOOL T-SHIRT

Unrestricted mobility in a stretch blend of chemical-free Coolcore® polyester/spandex that wicks moisture, helps regulate temperature, and shields you from the sun.

- FreeDry® moisture wicking
- FreeShade® UPF 15 sun protection
- Built-in odor control—stays fresh longer
- Flatlock seams for fabric stabilization and to eliminate chafing
- Mesh on back yoke enhances breathability

**COLORS:** MEDIUM HEATHER GRAY, MEDIUM INDIGO



## NEW HYPERTRAIL LOW

Our most technical shoe for moving fast on the trail. Also known to excel in town.

- Breathable, moisture-wicking upper
- Exclusive Trailfork shank supports instep, frees the ball of the foot
- InsoFit® cushioning EVA footbed
- SpeedPitch lug outsole for agility and traction
- Men's sizes 8-12, 13, 14

**COLORS:** STORM, BLACK



GRAPHIC CAP - DEBOSSSED SHIELD 014-0088, MULTIDANA 065-0124,  
COOLMAX® TRAIL CREW SOCKS - PATTERN 014-0127





**FIRST ASCENT**

# BC SANDSTONE

Soft. Light. Quiet. The flexibility to take on any activity. Our new 3-layer laminated stretch-knit fabric delivers complete waterproof protection—plus superior breathability and mobility.



BREATHABLE



STRETCH



WEATHEREDGE

WEATHEREDGE



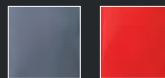
Ultra-smooth, silent waterproof fabric with a soft, supple feel.

## NEW WOMEN'S BC SANDSTONE JACKET

Waterproof with the freedom of four-way stretch. Our ultralight soft shell takes mobility and protection to the next level.

- WeatherEdge® Plus fabric is waterproof/breathable to 10k/10k
- StormRepel® Super DWR—our longest-lasting moisture-shedding finish
- Alpine feature set and active fit
- Super breathability
- Single-point adjustable hood fits with or without a helmet
- VISLON® AquaGuard® zippers; secure zip pockets

**COLORS:** WINTER BLUE, PIMENTO





# PERFORMANCE KIT #2 FOR MEN

Combining superior mobility and breathability with waterproof protection, this kit has you covered.

## NEW BC SANDSTONE JACKET

Waterproof with the freedom of four-way stretch. Our ultralight soft shell, now in a 3-layer laminated knit fabric.

- WeatherEdge® Plus is 10k/10k waterproof/breathable
- StormRepel® Super DWR moisture-shedding finish
- Alpine feature set and active fit
- Super breathability
- Single-point adjustable hood fits with or without helmet
- VISLON® AquaGuard® zippers; secure zip pockets

**COLORS:** ASCENT BLUE, DARK SMOKE

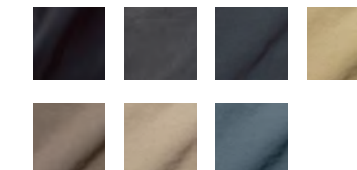


## GUIDE PRO SHORTS

Our guides live in these shorts. Two-way stretch mobility plus two low-profile, zip-closure cargo pockets.

- StormRepel® DWR finish sheds moisture
- FreeShade® UPF 50+ sun protection
- Polygiene® odor control waistband
- Lightweight and easy-packing

**COLORS:** BLACK, DARK SMOKE, GRAPHITE, LIGHT KHAKI, FOSSIL, SADDLE, STORM



## MOUNTAIN SHIRT

The ultimate do-anything outdoor shirt in a lightweight, easy-packing seersucker.

- FreeDry® moisture wicking
- FreeShade® UPF 50+ sun protection
- Two chest pockets

**COLORS:** BLUE, DARK FOREST, DARK ROYAL, DUSTY RED, FOREST, HERB, ISLAND BLUE, LIGHT JADE, MEDIUM INDIGO, MINERAL RED



## NEW BUTTER PACK 16L

Guide-built, ultralight 16-liter ascent pack with removable, multi-configuring compression straps to optimize loads or lash on extra gear.

- Easy-access quick closure without use of zipper
- Small zip top pocket for keys and snacks
- Vertical panel zip pocket for phone
- Internal hydration sleeve; removable waist belt
- Total weight: 320g / 11.25 oz

**COLORS:** BLACK, PIMENTO



TRAILCOOL UPF COOLING CAP 014-0194, TILTON POLARIZED SUNGLASSES  
022-0345, CAIRN MID 019-0018





# RESOLUTION PLUS

When building our new Resolution Plus knits, we set about to meet a high standard of active comfort. They had to be lightweight and moisture-wicking. Check. With odor control. Check. And four-way stretch. Check. And they *needed* to be ultrasoft. Mission accomplished.



MOISTURE  
WICKING



ODOR  
CONTROL



FOUR-WAY  
STRETCH

## NEW RESOLUTION PLUS COLLECTION

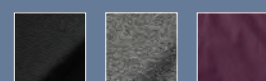
Ultrasoft, peached fabric with four-way stretch delivers superior comfort and mobility.

- FreeDry® moisture wicking
- Polygiene® odor control—Wear More. Wash Less®
- Active fit

## NEW FULL-ZIP HOODIE

- Scuba-style hood for warmth and unrestricted visibility
- Thumbhole sleeves for extended coverage and easy layering

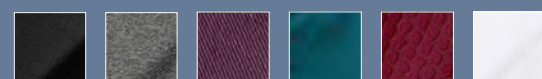
**COLORS:** BLACK, HEATHER GRAY, DARK PLUM



## NEW Y-BACK TANK TOP

- Shelf bra

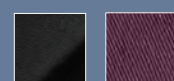
**COLORS:** BLACK, HEATHER GRAY, DARK PLUM, BLUE SPRUCE, RUBY, WHITE



## NEW LONG LAYERING CROP

- Side panels for enhanced fit and to prevent chafing

**COLORS:** BLACK, DARK PLUM







### RESOLUTION V-NECK T-SHIRT

Serious. Fun. Combining active performance with exceptional comfort in a soft polyester knit.

- FreeDry® moisture wicking
- FreeShade® UPF 20 sun protection
- Polygiene® odor control. Wear More. Wash Less®
- Overlock stitching for strength
- Raglan sleeves for unrestricted mobility

**COLORS:** BLACK, HEATHER GRAY, ATLANTIC, HEATHER BLUE, DUSTY PURPLE, LEAD, REDWOOD, WEDGEWOOD



### RESOLUTION MUSCLE TANK

The same moisture-wicking, odor-control fabric as the V-neck T-shirt.

**COLORS:** BLACK, HEATHER GRAY, REDWOOD, WEDGEWOOD







### RESOLUTION SHORT-SLEEVE T-SHIRT

Built for active performance and superior comfort with exceptionally soft polyester. Raglan sleeves for mobility.

- FreeDry® moisture wicking
- FreeShade® UPF 20 sun protection
- Polygiene® odor control—Wear More. Wash Less®
- Side arm panels to eliminate chafing
- Overlock stitching for strength

**COLORS:** ATLANTIC, BLUE SPRUCE, CHARCOAL HEATHER, CINDER, CORDOVAN, DARK BERRY, HEATHER BLUE, EXPEDITION GREEN, HEATHER BROWN, HEATHER GRAY, JUNIPER, LAKE, MALLARD, MINERAL RED



### RESOLUTION LONG-SLEEVE T-SHIRT

The same fabric and construction as the short-sleeve T-shirt.

**COLORS:** ATLANTIC, CHARCOAL HEATHER, DARK BERRY, EXPEDITION GREEN, HEATHER BLUE, HEATHER GRAY



### RESOLUTION POLO

The same moisture-wicking, odor-control fabric as the T-shirts, except with even more sun protection.

- FreeShade® UPF 40 sun protection

**COLORS:** BLACK, DARK BERRY, EVERGREEN, HEATHER GRAY, JUNIPER, MEDIUM INDIGO





FIRST ASCENT

GUIDE PRO

Our guides live in these pants. All-season versatility and two-way stretch for complete mobility. Plus, built-in water-repellency and sun protection match changing conditions.

- 

FLEXION TWO-WAY  
ACTIVE STRETCH
- 

STORMREPEL®  
DWR FINISH
- 

FREESHADE® UPF 50+  
SUN PROTECTION



**ZIP CARGO POCKETS**  
Low-profile cargos on each leg keep small essentials secure and accessible.

**WOMEN'S GUIDE PRO PANTS**

Lightweight, packable, and durable, these bestselling pants have become our guides' choice from mountaintop to city streets.

- Flexion two-way active stretch fabric
- StormRepel® DWR finish sheds moisture
- FreeShade® UPF 50+ sun protection

**COLORS:** BLACK, DARK CHINABERRY, DARK SMOKE, LIGHT KHAKI, MEDIUM INDIGO, SLATE GREEN



Adrian Ballinger, Eddie Bauer alpine climbing guide (AMGA/IFMGA), and Lynsey Dyer, Eddie Bauer ski athlete, trek along the jagged range of the Cordillera Huayhuash, Peru.





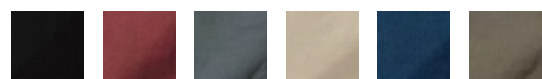


### WOMEN'S GUIDE PRO PANTS

Our guides' choice for any environment. Lightweight, packable, and durable.

- Flexion two-way active stretch fabric
- StormRepel® DWR finish sheds moisture
- FreeShade® UPF 50+ sun protection

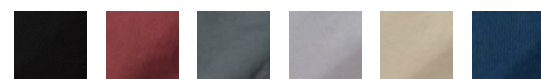
**COLORS:** BLACK, DARK CHINABERRY, DARK SMOKE, LIGHT KHAKI, MEDIUM INDIGO, SLATE GREEN



### GUIDE PRO CAPRIS

Identical to our Guide Pro Pants, except with a 21" inseam.

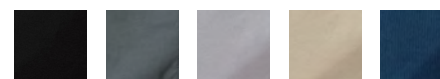
**COLORS:** BLACK, DARK CHINABERRY, DARK SMOKE, GRAY, LIGHT KHAKI, MEDIUM INDIGO



### GUIDE PRO SHORTS

The 7" shorts version of our bestselling pants.

**COLORS:** BLACK, DARK SMOKE, GRAY, LIGHT KHAKI, MEDIUM INDIGO



“

MY GUIDE PROS HAVE TAKEN ME TO SOME OF THE MOST BEAUTIFUL PLACES IN THE WORLD: THE COAST OF ICELAND, THE HARDERGRAT IN SWITZERLAND, AND THE PRISTINE RIVERS OF NEW ZEALAND.”

“

LIGHT, STRETCHY, DURABLE, BREATHABLE, AND VERY PACKABLE.”

“

THESE SHORTS MAKE ME FEEL SO GOOD. THEY FIT SO PERFECTLY, YOU MIGHT EVEN FORGET YOU'RE WEARING THEM.”

Caroline George, Eddie Bauer alpine climbing guide (IFMGA), on the Hardergrat trail in the Swiss Alps.



“

LEAVE THE HOUSE  
LOOKING FRESH, RIDE  
OUT THE WEATHER  
NABBING A SUMMIT,  
AND HIT APRÉS ON  
THE WAY HOME – ALL  
IN JUST ONE PAIR OF  
BADASS PANTS.”

“

THE IDEAL BALANCE  
OF LIGHTWEIGHT  
STRETCH FOR  
UNENCUMBERED  
MOVEMENT AND  
RUGGED DURABILITY  
DURING STRENUOUS  
HIKES, CLIMBS, AND  
SCRAMBLES.”

Drew Tabke, Eddie Bauer skiing athlete,  
on a trek along the jagged range of the  
Cordillera Huayhuash, Peru.

“  
MINIMALIST  
DESIGN, BUT  
WITH ENOUGH  
STORAGE IN  
THE POCKETS  
FOR EXTRA  
ESSENTIALS.”

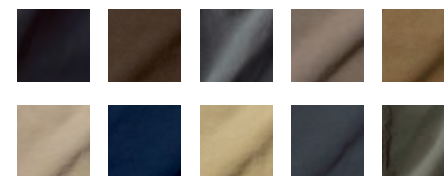


### MEN'S GUIDE PRO PANTS

Our guides' choice for any environment.  
Lightweight, packable, and durable.

- Flexion two-way active stretch fabric
- StormRepel® DWR finish sheds moisture
- FreeShade® UPF 50+ sun protection
- Polygiene® odor control waistband
- Articulated knees and trimmed calves

**COLORS:** BLACK, DARK PEAT, DARK SMOKE, FOSSIL,  
HAZELNUT, LIGHT KHAKI, MEDIUM INDIGO, SADDLE,  
STORM, SLATE GREEN



### GUIDE PRO CONVERTIBLE PANTS

Identical to our regular Guide Pros, except with  
zip-off legs.

- Convert to 10" shorts

**COLORS:** BLACK, DARK SMOKE, SADDLE



### GUIDE PRO SHORTS

The shorts version of our bestselling pants.  
Available in two lengths.

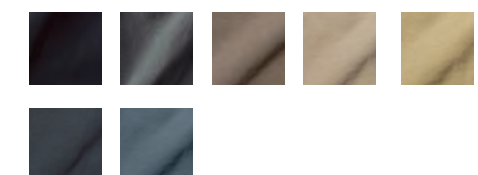
#### 9" SHORTS

**COLORS:** BLACK, DARK SMOKE, SADDLE



#### 12" SHORTS

**COLORS:** BLACK, DARK SMOKE, FOSSIL, LIGHT KHAKI,  
SADDLE, STORM, GRAPHITE







*Eddie Bauer* EST. 1920<sup>®</sup>

FOR MEDIA INQUIRIES, PLEASE CONTACT:

MELANIE SYRING PUBLIC  
RELATIONS Melanie Syring  
Tel: +49 5621 7989 24  
Email: [info@syring-pr.de](mailto:info@syring-pr.de)  
[www.eddiebauer.de](http://www.eddiebauer.de)