



*Eddie Bauer* EST. 1920  
WOMEN'S SPRING/  
SUMMER 2019



# EVERY EXCUSE TO PLAY

Give us a sunny day, a drizzle or downpour, a snow flurry or deep powder, and we'll consider it an invitation to get outside. Living in the Pacific Northwest, we've learned that if we wait on the weather to make our escape, we spend too much time inside, waiting. So instead, we make gear for every kind of condition.

Shirts and shorts with built-in sun protection. Waterproof jackets with stretch so you not only stay dry but can actually move without restriction. Ultralight layers with moisture-resistant insulation so you stay warm regardless of how damp it might be.

If you're looking for an excuse to play, just check the weather and grab something from our Spring Collection. Every piece is built to enjoy the outdoors. And guaranteed.







TECHNICAL GEAR AND APPAREL  
FOR MOUNTAIN SPORTS. TESTED AND  
APPROVED BY GUIDES. GUARANTEED.



PERFECTION EVOLVED  
**MICROTHERM® 2.0**

We took our bestselling ultralight and refined the fit for even more comfort and better performance.



WINDPROOF



WATERPROOF



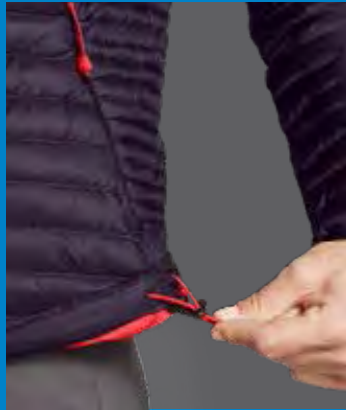
STORMREPEL  
SUPER DWR



DWR DOWN



**NEW HIGH-MOBILITY FIT**  
Enhanced sleeve and shoulder patterning and stretch fleece panels for full range of motion.



**ADJUSTABLE HEM**  
Drawcord lets you dial in the fit, seal out the cold

**MICROTHERM® 2.0  
STORMDOWN® JACKET**

Next-gen of our premium ultralight with a new, high-mobility fit and stretch fleece panels. Recycled, water-repellent shell.

- Temp Rating: Low Activity 45°F (7°C); Moderate Activity -5°F (-21°C)
- StormRepel® Super DWR—our longest-lasting moisture-shedding finish
- 800 fill StormDown® retains its insulating loft, even in wet conditions
- Patented microchannels for streamlined silhouette and superior thermal efficiency
- Packs into the secure zip chest pocket
- 089 0349

**COLORS:** BLACK, CARBON HEATHER, DEEP EGGPLANT, DUSTED INDIGO, WHITE, PIMENTO, PEACOCK





# INTRODUCING **BC UPLIFT**

The lightest waterproof jacket we've ever built.  
Tipping the scale at under 5 ounces, it's the ultimate minimalist. And delivers maximum protection.



WATERPROOF



STORMREPEL  
SUPER DWR



PACKS INTO  
POCKET



BREATHABLE



**NEW**

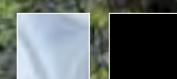
## **BC UPLIFT JACKET**

Complete waterproof protection tucks into the smallest pack corner until you need it. Fully seam-sealed.

- WeatherEdge® Pro nylon shell, waterproof/breathable to 20K/20K
- StormRepel® Super DWR for longest lasting moisture-shedding finish
- Packs into chest pocket for easy storage
- Adjustable hood fits with or without helmet

089 0511

**COLORS: BLUE SMOKE, BLACK**



**NEW**

## **BUTTER PACK 16L**

Our guides' newest tool—an ultralight, 16-liter ascent pack with removable, multi-configuring compression straps to optimize loads or lash on extra gear.

- Easy-access quick closure without use of zipper
- Small zip top pocket for keys and snacks
- Vertical panel zip pocket for phone
- Internal hydration sleeve; removable waist belt
- Total weight: 320 grams / 11.25 oz

023 0185

**COLORS: BLACK, PIMENTO**







**NEW**  
**BC SANDSTONE STRETCH JACKET**

Waterproof with the freedom of four-way stretch. Our ultralight soft shell, now in a 3-layer laminated stretch knit fabric for complete protection and superior mobility.

- StormRepel® Super DWR for longest lasting moisture-shedding finish
- Alpine feature set and active fit
- Super breathability
- Single-point adjustable hood fits with or without a helmet
- Aquaguard YKK® zippers; secure zip pockets

089 0457

COLORS: PIMENTO, WINTER BLUE



**NEW**  
**GUIDE PRO TRAIL TIGHT LEGGINGS**

Next-gen, technical version of our best-selling Trail Tights. Now with four-way stretch CORDURA® Naturalle nylon/spandex for exceptional durability.

- Durable fabric with the look and feel of cotton
- FreeDry® moisture wicking
- Power Mesh waistband with hidden pocket
- Angled zip pockets at hip for ease of movement

031 1313

COLORS: BLACK, CARBON, ASCENT BLUE





# BUILT FOR HIGH ADVENTURE

Our best-selling ultralight soft shell is made even better with refined design lines, enhanced fit, and a little extra length.



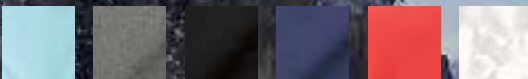
## SANDSTONE 2.0 SOFT SHELL JACKET

Ultralight soft shell with four-way stretch mobility, superior breathability, water- and wind-resistance, plus new, flattering design lines.

- StormRepel® DWR finish sheds moisture
- Adjustable drawcord waist
- Thumb loops for extended coverage and secure fit
- Three secure zip pockets (one interior)
- Media port in chest pocket

089 0306

COLORS: MARINA HEATHER, CINDER HEATHER, BLACK, VIOLA, PIMENTO, WHITE/GRAY



## GRAPHIC HAT - FIRST ASCENT

Six-panel construction, breathable mesh back, moisture-wicking headband, and adjustable snap closure.

- One size
- Cotton front panel and sunshade

014 0027

COLORS: BLACK, WAVE, ATLANTIC







**SANDSTONE SHIELD HOODED JACKET**

Hybrid soft shell with two fabrics, both with four-way stretch mobility. Waterproof at shoulders, hood, and back of arms for enhanced protection.

- Built for high-output activities like hiking, climbing, and skiing
- StormRepel® DWR finish sheds moisture
- Fully adjustable helmet-compatible hood
- Adjustable waist and cuffs
- Secure zip pockets

089 5831  
COLORS: BLACK, PIMENTO, WINTER BLUE



**HIGH ROUTE FLEECE HOODIE**

This midweight layer of FreeHeat® polyester fleece is ideal for alpine climbing, mountaineering, backcountry skiing, and backpacking.

- Flat-face stretch exterior
- Ultrasoft brushed interior
- Thumb loops for extended coverage and secure fit
- Low-profile hood provides extra warmth
- Secure zip hand pockets

089 3701  
COLORS: BOYSENBERRY, CREEK, CARBON



Multiclava  
014 3322

**GUIDE PRO SHORTS**

The short version of our best-selling Guide Pro Pants, with the same construction and details.

- Flexion 2-way active stretch fabric
- StormRepel® DWR finish sheds moisture
- FreeShade® UPF 50+ sun protection
- Two low-profile, secure zip cargo pockets
- Easy-packing convenience

031 3076  
COLORS: BLACK, LIGHT KHAKI, MEDIUM INDIGO, DARK SMOKE, GRAY



**GUIDE PRO PANTS**

Our guides' choice for everything outside—from moving fast in the mountains to lounging in camp. Lightweight and durable, with stretch mobility.

- Flexion 2-way active stretch fabric
- StormRepel® DWR finish sheds moisture
- FreeShade® UPF 50+ sun protection
- Two low-profile, secure zip cargo pockets
- Easy-packing convenience

031 1135  
COLORS: BLACK, LIGHT KHAKI, MEDIUM INDIGO, DARK SMOKE, DARK CHINABERRY, SLATE GREEN







**OUTDOOR TRAINING APPAREL AND  
FOOTWEAR. BUILT WITH PERFORMANCE  
FABRICS AND DESIGNED FOR MAXIMUM  
VERSATILITY. GUARANTEED.**







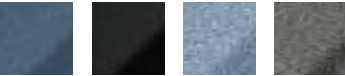
**RESOLUTION V-NECK T-SHIRT**

All the features of the Muscle Tank, in a short-sleeve V-neck.

- FreeDry® moisture wicking
- FreeShade® UPF 20 sun protection
- Polygiene® odor control. Wear More. Wash Less®

031 3209

**COLORS: ATLANTIC, BLACK, HEATHER BLUE, HEATHER GRAY**



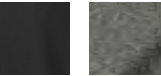
**NEW TRAIL MIX HYBRID LEGGINGS**

New hybrid take on our best-selling Trail Tights, with our popular Incline fabric on front panel and pockets for extra water repellency.

- FreeDry® moisture wicking
- StormRepel® DWR finish on woven front panels
- FreeShade® UPF 50 sun protection
- Polygiene® odor control in knit fabric
- Angled, secure zip hip pockets

031 1450

**COLORS: BLACK, HEATHER GRAY**





# INTRODUCING TRAILCOOL

Technical knits for maximum comfort during peak performance.



MOISTURE  
WICKING



UPF 15



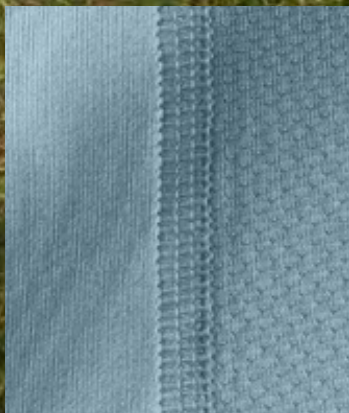
ODOR  
CONTROL



Our TrailCool knits use Coolcore® fabric technology to help regulate temperature, wick moisture, and control odor while hiking, training, and living an active life.



**TRAILCOOL MESH**  
enhances breathability, helping to prevent overheating during strenuous activity



**FLATLOCK SEAMS**  
provide strength, minimize bulk, and reduce chafing for maximum comfort



**NEW**  
**TRAILCOOL SCOOP-NECK T-SHIRT**

Same features as the Racerback Tank in a short-sleeve T-Shirt.

- Mesh on back yoke enhances breathability
- FreeDry® moisture wicking
- FreeShade® UPF 15 sun protection
- Built-in odor control—stays fresher longer

031 1576

**COLORS: MEDIUM HEATHER GRAY,  
WEDGEWOOD, REDWOOD**



**NEW**  
**TRAILCOOL RACERBACK TANK**

Stretch blend of chemical-free Coolcore® polyester/spandex wicks moisture, helps regulate temperature, and shields from the sun.

- Mesh on back yoke enhances breathability
- FreeDry® moisture wicking
- FreeShade® UPF 15 sun protection
- Built-in odor control—stays fresher longer

031 1577

**COLORS: MEDIUM HEATHER GRAY,  
WEDGEWOOD, REDWOOD**



**NEW**  
**TRAILCOOL PRO HIGH RISE CAPRIS**

High-performance Coolcore® nylon/spandex stretch fabric wicks moisture, dries fast, and has built-in odor control.

- FreeDry® moisture wicking
- High-rise body with Power Mesh waistband
- Interior waistband pocket
- Side pockets with bonded seam for sleek lines
- Textured mesh at calf

031 1579

**COLORS: BLACK, CARBON**







**NEW**  
**TRAIL TANK**

Compression, 4-way stretch polyester/spandex offers superior mobility and comfort along with built-in moisture wicking and odor control.

- FreeDry® moisture wicking
- Polygiene® odor control. Wear More. Wash Less®
- Racerback styling to prevent chafing
- Flat-locked seams for smooth fit

031 1283

COLORS: BLACK, HEATHER GRAY, MEDIUM INDIGO, REDWOOD



**MOVEMENT HIGH RISE CAPRIS**

Compression polyester/spandex with a tummy-flattening waistband that won't gap and flattering, high-rise styling.

- FreeDry® moisture wicking
- Polygiene® odor control. Wear More. Wash Less®
- PowerMesh waistband with hidden pocket
- Slimming back yoke and side seam construction
- Legging style in a capri length (average inseam: 21")

031 1078

COLORS: REDWOOD, BLACK



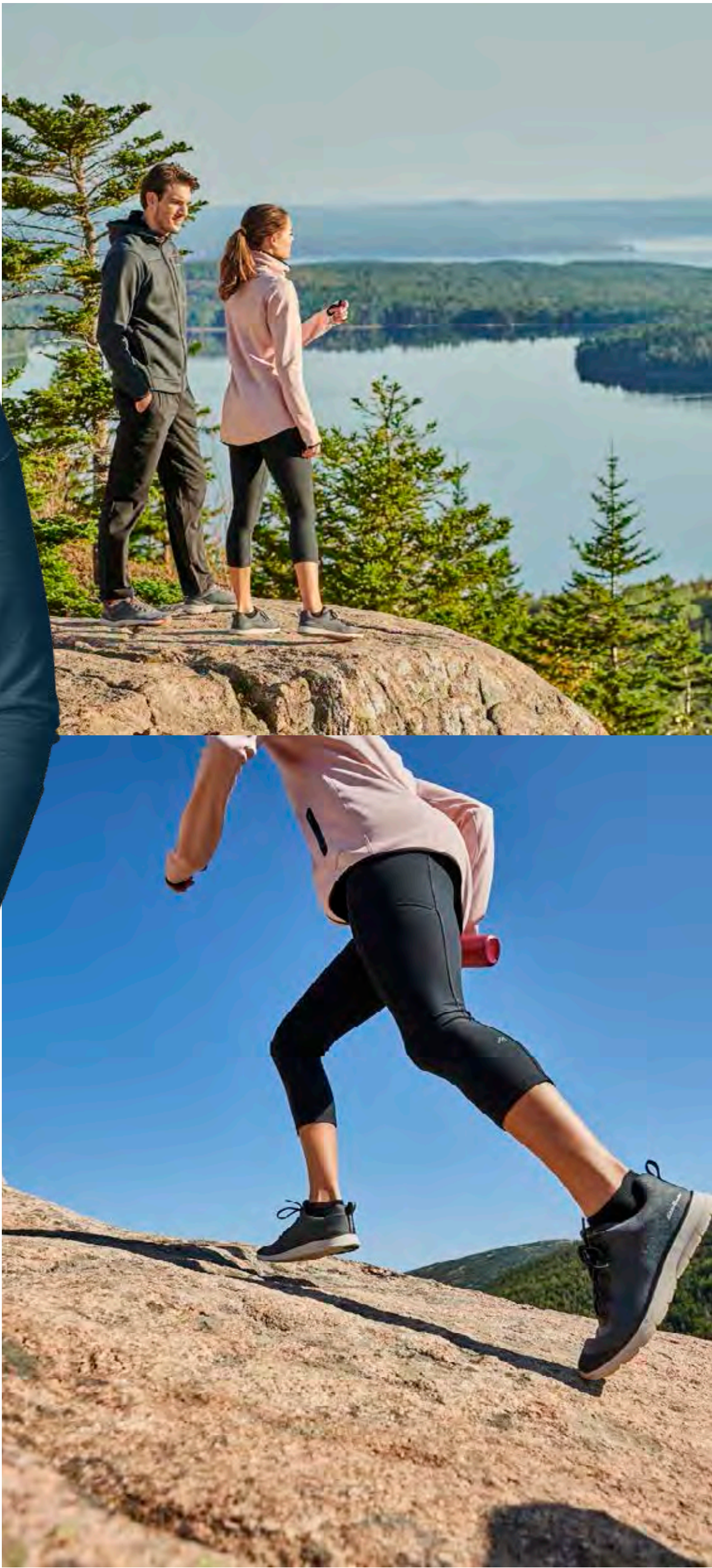
**AFTER BURN 2.0 JACKET**

Soft and warm on the inside, sleek on the outside, this lightweight fleece jacket keeps your muscles warm and relaxed before and after workouts.

- Thumb loops for extended coverage and secure fit
- Princess seams create flattering lines
- Zipper garage prevents chafing
- High neck shields throat from wind
- Elastic binding at edges for a clean fit

006 0397

COLORS: PALE PINK, BLACK, CREEK



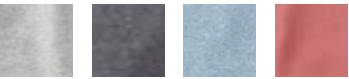




**NEW**  
**ENLIVEN LONG-SLEEVE SWEATSHIRT**  
Ultimate relaxation in an easy-fitting pullover of ultrasoft modal/polyester/spandex that's the perfect weight for year-round use.

- Thumb loops for extended coverage and secure fit
- Rib-knit cuffs and hem for enhanced recovery

031 1898  
**COLORS:** LIGHT HEATHER GRAY, CHARCOAL HEATHER, WEDGEWOOD, REDWOOD



**NEW**  
**ENLIVEN LONG-SLEEVE HOODIE**

The same lusciously soft construction as the crewneck, with the addition of a hood.

- Thumb loops for extended coverage and secure fit
- Rib-knit cuffs and hem for enhanced recovery
- Adjustable hood

031 1900  
**COLORS:** LIGHT HEATHER GRAY, CHARCOAL HEATHER, WEDGEWOOD



**NEW**  
**SUMMIT BOMBER**

Exactly the kind of comfort you want, pre- and post-workout. French terry in a soft, breathable, cotton/polyester/spandex stretch construction.

- Rib-knit cuffs and hem for enhanced recovery
- Woven pocket overlays add strength
- Full zip front

009 1507  
**COLORS:** CHARCOAL HEATHER, HEATHER ASH







**ADVENTURE TRAVEL APPAREL AND  
FOOTWEAR. BUILT FOR SUPERIOR COMFORT  
AND PERFORMANCE IN ALL CLIMATES AND  
CONDITIONS. GUARANTEED.**





# INTRODUCING THE VENTATREX PACKABLE JACKET

**LIGHTWEIGHT. EASY-PACKING. HIGHLY BREATHABLE.** The perfect travel companion weighs just 5 oz, and has specially placed perforations for easy venting when active.



BREATHABLE



WATER  
REPELLENT



WIND  
RESISTANT



PACKABLE



**PACKS INTO INTERIOR POCKET**  
Easy to store, easy to get to—  
essential for adventure travel



**PERFORATED BACK**  
Enhanced breathability for  
maximum comfort while active



**NEW**

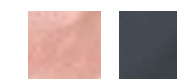
## VENTATREX PACKABLE JACKET

This lightweight wind- and water-resistant soft shell stows away in the interior pocket when not needed, making it ideal for travel.

- Light, supple soft shell fabric
- Ergonomic hood provides weather and sun protection
- Longer length, with droptail hem

089 0441

**COLORS: PALE PINK, STORM**







**NEW**  
**ASTER SHORT-SLEEVE WRAP DRESS - SOLID**

The ultimate travel dress—simple, versatile, comfortable—in easy-packing, easy-care stretch polyester/spandex.

- FreeDry® moisture wicking
- FreeShade® UPF 50+ sun protection
- Polygiene® odor control. Wear More. Wash Less®
- Self-fabric tie

031 1305

COLORS: BLACK, AMETHYST



**NEW**  
**ENATAI 3/4-SLEEVE TUNIC**

Soft, easy-draping polyester/rayon/spandex, with moisture-wicking, odor control, and easy-care convenience makes this tunic a natural traveler.

- FreeDry® moisture wicking
- Polygiene® odor control. Wear More. Wash Less®
- Soft, sweater-like texture

009 1552

COLORS: ATLANTIC, BLACK, BLACK/WHITE



**NEW**  
**ENATAI TANK**

The same lightweight, moisture-wicking fabric with built-in odor control as the tunic, in a high-neck tank. Side slits at hem.

009 1554

COLORS: ATLANTIC, BLACK, BLACK/WHITE



**NEW**  
**INFINITY SPLIT-BACK MUSCLE T-SHIRT**

The same high-performance polyester/spandex stretch jersey as the Rib-Trim Tank, in a muscle shirt style.

031 1439

COLORS: BLACK, RAIN, DARK SMOKE







**KONA TRENCH**

Waterproof polyester shell is seam-sealed for maximum weather protection. The vented cape back enhances breathability to prevent overheating.

- WeatherEdge® 2.5-layer waterproof/breathable technology
- StormRepel® DWR finish sheds moisture
- Adjustable hood and cuffs
- Secure zip pockets (one interior)
- Belted waist

006 5039

COLORS: ATLANTIC, BLACK, LIGHT GRAY, LIGHT KHAKI, AZURE



**NEW GATE CHECK LONG-SLEEVE DRAWSTRING TOP**

Comfort on the road. Natural cotton is blended with ultrasoft Tencel® lyocell for exceptional moisture management and breathability.

- Soft-draping fabric
- Easy-packing, easy-care

009 1603

COLORS: BLACK, AMETHYST, WHITE, LIGHT HEATHER GRAY



**NEW DEPARTURE WIDE-LEG CROP PANTS**

With their Flexion four-way stretch polyester/spandex, these pants are built for everything from adventure travel to everyday casual.

- FreeDry® moisture wicking
- FreeShade® UPF 50+ sun protection
- Average inseam: Reg 26"; Petite 24"; Tall 28"

031 1348

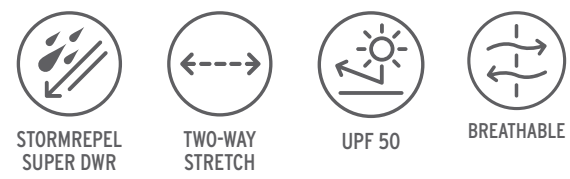
COLORS: ATLANTIC, BLACK





# ATLAS 2.0

**MASTERS OF THE OPEN ROAD AND THE ROADLESS BYWAYS** We build our Atlas 2.0 soft shells not for the destination, but for adventure travel, wherever that takes you.



### ATLAS 2.0 JACKET

A lightweight, durable, all-world traveler, this soft shell jacket features Flexion two-way active stretch for comfort and seven pockets for essentials.

- StormRepel® DWR finish sheds moisture
- FreeShade® UPF 50 sun protection
- Back vent for enhanced breathability
- Adjustable drawstring waist
- TripZip® pocket for travel documents and phone

006 4040

COLORS: BALTIC, ATLANTIC, BLACK, LIGHT GRAY, DARK LODEN, DEEP OLIVE



### ATLAS 2.0 VEST

Sleeveless version of our best-selling travel jacket, with all the same features.

006 4023

COLORS: DEEP OLIVE, ATLANTIC, BLACK, LIGHT GRAY, DARK LODEN



### ATLAS 2.0 TRENCH

The long version of our popular travel jacket, with an adjustable, snap-off hood and six pockets.

- Two-way front zip for comfort, moving or sitting

006 0410

COLORS: DARK LODEN, BLACK, MEDIUM INDIGO







**NEW**  
**VOYAGER BOMBER**

The Flexion two-way stretch fabric of this zip-front bomber is water-repellent and has built-in UPF sun protection.

- StormRepel® DWR finish sheds moisture
- FreeShade® UPF 50+ sun protection
- Two TripZip® pocket for passport and phone
- Two secure zip hand pockets

011 0594

COLORS: BLACK, DARK THYME



**NEW**  
**ATLAS EXPLORATION  
BOYFRIEND CARGO SHIRT**

A staple for adventure travel, this easy-packing nylon shirt wicks moisture and shields from the sun's UV light.

- FreeDry® moisture wicking
- FreeShade® UPF 50+ sun protection
- Front darts for enhanced fit
- Back yoke

031 1281

COLORS: LIGHT KHAKI, WHITE, DARK THYME



**BYGONE 25 PACK**  
• 19" x 12" x 6" | 25L | 1,526 cu. in.  
023 5002 | \$80 US | \$99 CAD |  
01.02.2019  
COLORS: BLACK, PUMICE, DRIFTWOOD



**BYGONE 45L DUFFEL**  
• 23" x 14.25" x 9" | 45L | 2,746 cu. in.  
023 0041

COLORS: BLACK, PUMICE







**MOUNTAIN LONG-SLEEVE SHIRT**

The ultimate breathable travel shirt, this popular style packs easily, wicks moisture, and has built-in sun protection. Soft nylon/polyester.

- FreeDry® moisture wicking
  - FreeShade® UPF 40 sun protection
  - Back pleats for enhanced mobility
  - Roll tab sleeves for easy adjustment
  - Bust darts for a better fit
- 031 0076
- COLORS: WHITE, RAIN, AMETHYST, CREAM, GUIDE GREEN, VANILLA, BALTIC



**HORIZON ADJUSTABLE JOGGER PANTS**

Ultimate comfort and simplicity. Flexion two-way stretch nylon/spandex delivers excellent mobility for adventure travel.

- StormRepel® DWR finish sheds moisture
  - FreeShade® UPF 50+ sun protection
  - Elastic waistband with adjustable drawstring
  - Adjustable jogger hem
  - Relaxed, straight leg; side pockets
- 031 1716
- COLORS: BLACK, DARK SMOKE



**HORIZON CARGO SHORTS**

The same two-way stretch nylon/spandex as our joggers, in a 4" inseam cargo short.

- Two front pockets
  - Two low-profile, snap-close cargo pockets
- 031 1152
- COLORS: BLACK, LIGHT KHAKI, DARK SMOKE



**NEW ATLAS CLOUDLINE SNEAKER**

Built for adventure travel, this athletic-style shoe has a lightweight knit upper with reinforced eyestay and extra-cushion Cloudline outsole.

- Lightweight, easy-packing
  - Women's sizes 6-10, 11
- 020 0095
- COLORS: DARK SMOKE, MEDIUM INDIGO, CINDER





# FOUR-WAY GO

**BUILT TO MOVE** Our Departure travel pieces start with a simple fact: travel is about motion. So we use a four-way stretch fabric that delivers unrestricted mobility. It also happens to wick moisture and block UV light.



**NEW**  
**DEPARTURE DRESS - SOLID**

The ultimate, go anywhere, do anything travel dress in a Flexion four-way stretch polyester/spandex that packs, and wears, easily.

- FreeDry® moisture wicking
- FreeShade® UPF 50+ sun protection
- Fitted at the bodice, with an easier fit at the skirt
- Chest seams enhance shape
- Average length: Reg 37.5"

031 1456

**COLORS: ATLANTIC, BLACK**



**NEW**  
**DEPARTURE CAMI - SOLID**

This double-layer travel cami is made with our four-way stretch polyester/spandex Departure fabric.

- Adjustable straps for maximum comfort
- Versatile styling works alone or layered under a jacket

031 0685

**COLORS: BLACK, DARK THYME**



**DEPARTURE AMPHIB SHORTS**

The same four-way stretch polyester/spandex as our dress.

- Elastic waist with adjustable drawstring
- Average inseam: Reg 4"

031 1334

**COLORS: DUSTY RED, BLACK**







# RAINPROOF

---

WE DON'T BELIEVE IN RAIN DELAYS.  
WE JUST BUILD BETTER RAIN GEAR.  
ADVENTURE DOESN'T WAIT.



# INTRODUCING WATERPROOF LIKE YOU'VE NEVER FELT

Not just compete weather protection. Complete freedom of movement too, with stretch. And no irritating crinkle when you move.



WATERPROOF



FOUR-WAY  
STRETCH



STORMREPEL  
DWR



BREATHABLE



**NEW**

## CLOUD CAP 2.0 STRETCH RAIN JACKET

Soft, quiet, and stretchy, so that dry in a downpour can actually mean comfortable too. Fully seam-sealed for maximum weather protection.

- WeatherEdge® waterproof/breathable stretch polyester
- StormRepel® DWR finish sheds moisture
- Pit zips allow quick venting to prevent overheating
- Adjustable hood, cuffs, and hem
- Secure zip hand pockets

089 0557

COLORS: DEEP EGGPLANT, BLACK



Put away stiff, noisy hard shells and experience the WeatherEdge Stretch difference.



**MECHANICAL STRETCH**  
WeatherEdge® 2.5-layer  
waterproof/breathable  
fabric in a new stretch  
construction for superior  
comfort



# CHARLY ANGELS

**CALM IN A STORM** Having a Charly in your closet is like having someone watching over you when the weather turns unfriendly. Waterproof shelter, in three easy styles.



## CHARLY JACKET

Casual style meets serious performance with this waterproof, windproof jacket with seam-sealed construction for maximum weather protection.

- WeatherEdge® cotton/nylon shell, waterproof/breathable to 5K/5K
- StormRepel® Super DWR for longest lasting moisture-shedding finish
- Front patch pockets with both top and side access
- Secure interior pocket
- Adjustable hood, cuffs, and hem

006 0317

**COLORS:** RED, BLACK, MEDIUM INDIGO, DARK MARIGOLD, FLAX



## NEW CHARLY ANORAK

Lightweight, waterproof nylon and the ability to pack it into its own pocket makes this pullover anorak the ideal shelter to bring on any hike or trip.

- WeatherEdge® technology, waterproof/breathable to 5K/5K
- StormRepel® Super DWR for longest lasting moisture-shedding finish
- Packs into dual-entry front kangaroo pocket
- Adjustable hood; elasticized cuffs and hem
- Half-zip front placket for quick venting

006 0641

**COLORS:** DARK LODEN, DARK MARIGOLD, DARK BERRY



## NEW CHARLY PARKA

A longer variation on our popular Charly Jacket, with the same seam-sealed, waterproof protection.

- WeatherEdge® technology, waterproof/breathable to 5K/5K
- StormRepel® Super DWR for longest lasting moisture-shedding finish
- Split hem can be snapped to create a straight hem
- Secure zip pockets
- Adjustable hood and cuffs

006 0638

**COLORS:** HUNTER, BLACK







**NEW**  
**BC UPLIFT JACKET**

This is the lightest waterproof jacket we’ve ever made. Fully seam-sealed for maximum protection.

- WeatherEdge® Pro nylon shell, waterproof/breathable to 20K/20K
- StormRepel® Super DWR for longest lasting moisture-shedding finish
- Packs into chest pocket for easy storage
- Adjustable hood fits with or without helmet

089 0511

COLORS: BLUE SMOKE, BLACK



**CLOUD CAP  
LIGHTWEIGHT RAIN JACKET**

Ultralight waterproof nylon shell is easy to bring anywhere—it packs into the right hand pocket so it’s ready when you need it.

- WeatherEdge® 2.5-layer waterproof/breathable technology
- StormRepel® Super DWR for longest lasting moisture-shedding finish
- Pit zips allow quick venting to prevent overheating
- Secure zip hand pockets
- Adjustable hood, hem, and cuffs

089 5822

COLORS: PALE PINK, BLACK, PEACOCK, DARK PLUM, CHROME HEATHER, BLUE SMOKE



**RAINFOIL® PACKABLE JACKET**

Waterproof jacket doubles as a travel pillow when you pack it into the right hand pocket. Secure zip hand pockets; interior Velcro® pocket.

- WeatherEdge® 2-layer waterproof/breathable technology
- StormRepel® DWR finish sheds moisture
- Adjustable drop hood stows in collar when not needed
- High neck provides added protection
- Adjustable cuffs and hem

006 0315

COLORS: RED, BLACK, CHAMBRAY BLUE, MEDIUM INDIGO, CLOUD, DEEP EGGPLANT, NECTAR





# LIFESTYLE

---

UNCOMMON COMFORT. GUARANTEED.







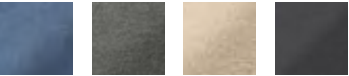
**NEW**  
**KICK BACK 2.0 JOGGER W/ZIP POCKET**

We've updated our popular cotton/spandex pull-on Kick Back Jogger with a new pigment wash for gently weathered color. Slightly Curvy fit.

- Double front pockets (hand and zip)
- Back patch pockets
- Adjustable drawstring waist
- Sits below natural waist; mid-rise; moderately curvy through hip and thigh
- Average inseam: Reg 28"

011 1577

**COLORS:** DUSTED INDIGO, CAPERS, CLOUD, DARK SMOKE



**NEW**  
**KICK BACK TWILL JACKET**

Versatile, button-front casual jacket in breathable cotton/spandex has a relaxed, easy fit for comfortable layering.

- Adjustable drawcord waist
- Four front pockets

011 1152

**COLORS:** CAPERS, DARK SMOKE



**NEW**  
**CAMP FLEECE LOGO CREWNECK SWEATSHIRT**

The classic cotton/polyester pullover sweatshirt, updated with an easy fit and shorter body length.

- Rib-knit collar, cuffs, and hem for enhanced recovery
- Dorito stitch detail at neckline
- Flocked-print logo across the chest
- Average length: Reg 23"

009 2052

**COLORS:** HEATHER GRAY, LIGHT HEATHER GRAY, SCARLET





# QUEST FLEECE

Plush, midweight polyester, brushed to an extraordinary softness for cross-seasonal comfort and warmth.

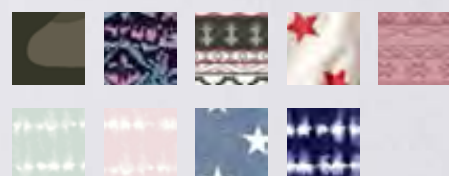
## QUEST FLEECE 1/4-ZIP - PRINT

Versatile, midweight polyester fleece provides soft, lightweight warmth, resists absorbing moisture, and dries quickly.

- Cross-seasonal 200-weight fleece
- Standup collar shields neck from wind
- Deep front zip for quick venting while active
- Curved seams for a flattering fit

031 1805

COLORS: CAMO, MISTY BLUE, OLIVE, IVORY, DUSTY PURPLE, WASHED SAGE, LIGHT PINK, BLUE, PATRIOT BLUE



NEW

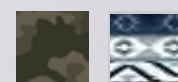
## QUEST FLEECE SWEATSHIRT - PRINT

Our popular 200-weight polyester fleece in an easy-fit, crewneck pullover sweatshirt.

- Rib-knit cuffs and hem for enhanced recovery
- Dorito stitch detail at collar
- Average length: Reg 23"

031 1521

COLORS: CAMO, GLACIER







**NEW**  
**RAW-EDGE**  
**BOYFRIEND SHORTS - STARS**

Classic five-pocket styling gets celestial with star accents. The Boyfriend fit sits below natural waist; mid-rise, relaxed through hip and thigh.

011 1504

COLORS: LAKE



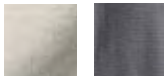
**NEW**  
**ADVENTURER®**  
**RIPSTOP 2.0 PLEATED SHORTS**

The same new cotton/Tencel® lyocell/spandex ripstop as our Slim Crop Pants, in a pleated-front short. Slightly Curvy fit.

- Front hand pockets, back patch pockets
- Fixed waistband with belt loops
- Average inseam: Reg 4.5"

011 1586

COLORS: PUMICE, DARK SMOKE



**NEW**  
**ORIGINAL HIGH-RISE SHORTS**

The same cotton/spandex denim as our Stovepipe Crop Jeans, in a rolled-hem short silhouette. Slightly Curvy fit.

- Average inseam, unrolled/rolled: Reg 6"/5"

011 1570

COLORS: RETRO, WHITE







### STINE'S FAVORITE FLANNEL SHIRT - BOYFRIEND

Premium cotton flannel is brushed on both sides for ultrasoft comfort. The Boyfriend body has drop shoulders, slightly roomier cut, and one pocket.

- Garment-washed to increase softness and prevent shrinkage
- Bust darts for enhanced fit

008 3418

COLORS: BLUE, VANILLA, PALE PINK



### NEW FAIRHAVEN LINEN JACKET

Blending linen with cotton and CoolMax® polyester, this summer-weight jacket delivers natural breathability and moisture-wicking comfort.

- Adjustable drawcord waist
- Adjustable hood and cuffs
- Back vent at hem for enhanced mobility

006 0642

COLORS: SLATE GREEN



### ELYSIAN WIDE-LEG HIGH-RISE JEANS

The most comfortable jeans you'll ever wear. StayShape® stretch denim is cotton/Tencel® lyocell/viscose/polyester/Lycra® spandex. Slightly Curvy fit.

- Classic five-pocket styling
- Sits below natural waist; mid-rise; moderately curvy through hip and thigh
- Average inseam, Reg: 25"; Leg opening 19"; Front rise 10.25"

011 1353

COLOR: MARINA





# EASY DOES IT

**NO WORRIES** is at the heart of our approach to casual sportswear. That means absolute comfort, simple solutions that work together, and quality that never leaves any doubt. In fact, it's guaranteed.

**LAYERIFIC CAMI**

Ultra-smooth cotton/spandex with gentle stretch, this lightweight cami makes layering easy.

009 4978

COLORS: LIGHT CHARCOAL HEATHER, BLACK, PLUM WINE, WHITE, IVORY



**NEW ORIGINAL HIGH-RISE STOVEPIPE CROP JEANS**

Our new cotton/spandex crop jeans have the look of original denim, with the comfort of gentle stretch. Slightly Curvy fit.

- Classic five-pocket styling
- Stovepipe leg shape with raw-edge detail
- Sits below natural waist; mid-rise; moderately curvy through hip and thigh
- Average inseam: 26"; Knee 19"; Opening 16.5"

011 1569

COLORS: RETRO, WHITE



**NEW EMMONS VISTA TIE-FRONT BOYFRIEND SHIRT**

A natural fiber, warm weather blend of linen/cotton combines breathable comfort with casual style in this short-sleeve shirt.

008 0694

COLORS: WHITE, BALTIC



**NEW HALLER LEATHER SLIP-ON**

The perforated suede-leather upper has the cross-seasonal style to take you from summer into fall.

- Vulcanized construction for durability
- InsoFit® cushioning EVA footbed
- Women's sizes 6-10, 11

020 0117

COLORS: FRENCH BLUE, BLACK, LIGHT KHAKI





**NEW**  
**RADIATOR FLEECE BOMBER**

The same FreeHeat® polyester sweater fleece as our pullover, in a new bomber style.

- Rib-knit collar, cuffs, and hem for enhanced recovery
- Angled hand pockets
- Average length: Reg 24"

031 1310

COLORS: BLACK, GRAY, EUCALYPTUS



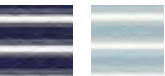
**RADIATOR FLEECE PULLOVER - STRIPE**

Ultrasoft, tightly knit, FreeHeat® polyester sweater fleece is what cozy layering is all about. Adjustable, three-piece hood.

- Raglan sleeves for unrestricted mobility
- Snap-close front placket
- Single, kangaroo pocket
- Shirttail hem

031 0906

COLORS: ATLANTIC, WEDGEWOOD, DARK THYME







**NEW**  
**TRANQUIL SHORT-SLEEVE SHIRRED SHIRT - INDIGO**

The same styling as our Patterned Tranquil shirt, but in 100% Tencel® lyocell.

008 0504

COLORS: WHITE, BLEACHED



**TRANQUIL SHORT-SLEEVE SHIRRED SHIRT - PATTERN**

An ultrasoft, breathable blend of rayon/cotton/Tencel® lyocell makes this a favorite warm weather shirt.

- Can be worn tied or untied at the front

008 0501

COLORS: DUSTY RED, BALTIC







*Eddie Bauer* EST. 1920

FOR MEDIA INQUIRIES, PLEASE CONTACT:

MELANIE SYRING

PUBLIC RELATIONS

Melanie Syring

Tel: +49 5621 7989 24

Email: [info@syring-pr.de](mailto:info@syring-pr.de)

[www.eddiebauer.de](http://www.eddiebauer.de)